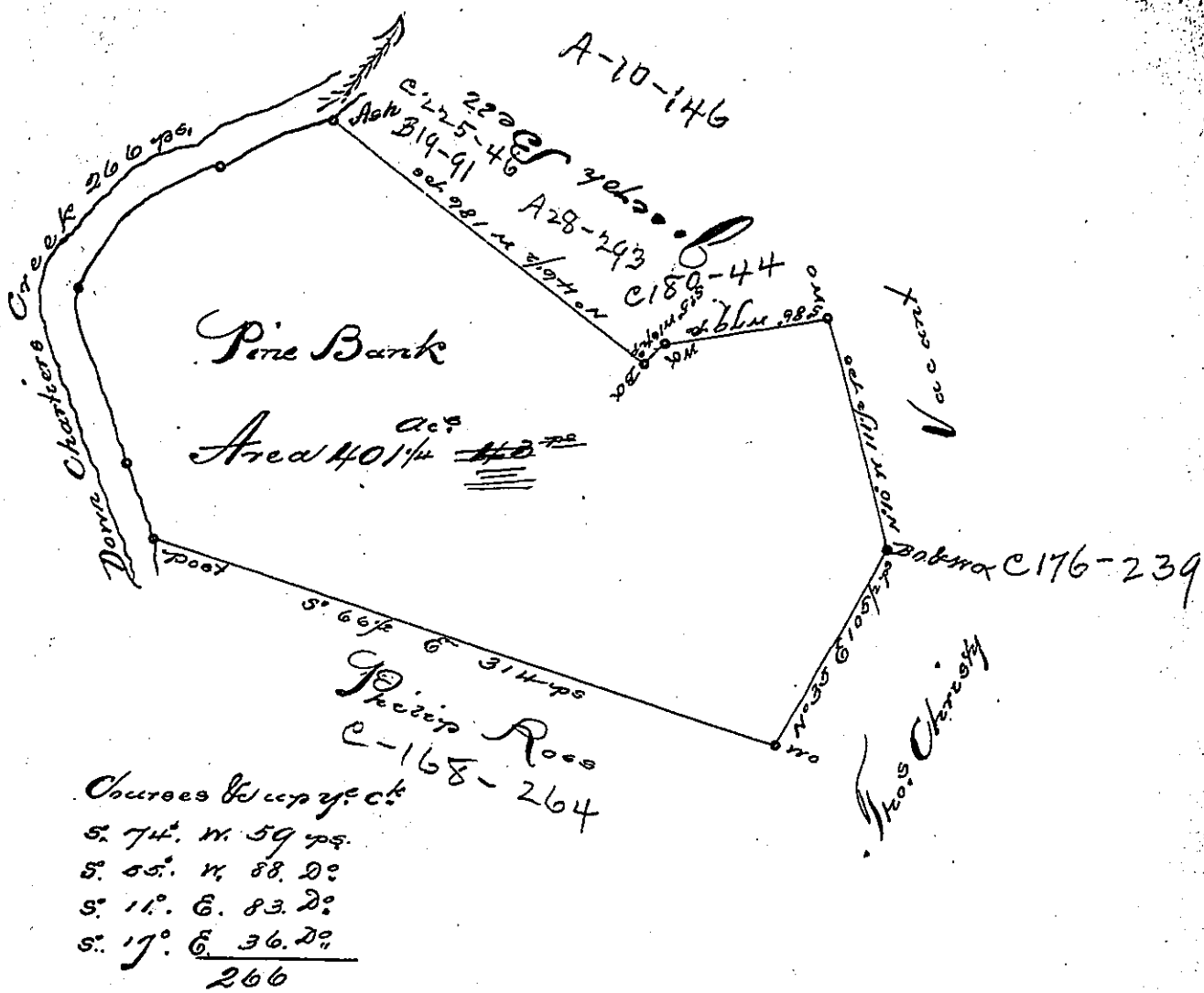


P-8-469

151

2099



A Draught of a Survey called "Pine Bank," situated on Charters Creek in Washington County, containing 40 1/4 acs, 4 3/4 ps strict measure, executed Oct 12<sup>th</sup> 1785, in consequence of a Certificate for 400 acs, granted Philip Ross by the Commiss<sup>rs</sup> appointed by Virg<sup>a</sup> to adjust the claims to unpatented lands in the Counties, Monro<sup>a</sup>, Wyo<sup>a</sup> & Ohio and duly entered with 4<sup>e</sup> County Sur<sup>r</sup> J<sup>r</sup> Ret. 17 May 87 & Ent<sup>d</sup> 27 March 80.

Presley Nevill  
 Matt<sup>r</sup> Ritzkie

Jno Lukens Esqr  
 Esq<sup>r</sup>

IN TESTIMONY that the above is a copy of the original remaining on file in the Department of Internal Affairs of Pennsylvania, made conformably to an Act of Assembly approved the 16th day of February, 1833, I have hereunto set my Hand and caused the Seal of said Department to be affixed at Harrisburg, this fourth day of August 1898

James W. Pitta  
 Secretary of Internal Affairs